

Lessard-Sams Outdoor Heritage Council

Fiscal Year 2017 / ML 2016 Request for Funding



Date: June 01, 2015

Program or Project Title: Southeast Minnesota Protection and Restoration Phase IV

Funds Requested: \$9,517,700

Manager's Name: Richard Biske

Title: Freshwater Conservation Program Director

Organization: The Nature Conservancy

Address: 1101 West River Parkway

Address 2: Suite 200

City: Minneapolis, MN 55415

Office Number: 612-331-0766

Mobile Number: 651-564-0591

Email: rbiske@tnc.org

Website: nature.org

County Locations: Fillmore, Goodhue, Houston, Olmsted, Wabasha, and Winona.

Regions in which work will take place:

- Southeast Forest

Activity types:

- Protect in Easement
- Restore
- Enhance
- Protect in Fee

Priority resources addressed by activity:

- Forest
- Prairie
- Habitat

Abstract:

This project will protect approximately 2,150 acres and restore and enhance approximately 1,575 acres of declining habitat for important wildlife species in strategically targeted areas of biodiversity significance in the Blufflands resulting in increased public access and habitat.

Design and scope of work:

The Southeast Blufflands region is as rich in habitat for game and nongame wildlife species as it is in aesthetic beauty. The greater Mississippi River Blufflands have been largely untouched by glaciers, resulting in a diversity and uniqueness of habitats found nowhere else in Minnesota. This diversity of habitats makes Southeast Minnesota critical to the State's enduring legacy of high quality forests, rivers and prairies. Coldwater trout streams, cliffs, forests, oak savannas and prairies can be found in its scenic bluffs and valleys. Of particular importance are the 86 different native plant community types mapped by the Minnesota Biological Survey (MBS), covering nearly 149,670 acres. One hundred eighty-three species of state listed rare plants and animals call the region home. Many of them are concentrated in the 749 sites of biodiversity significance mapped by MBS.

The area is highly regarded for turkey and deer hunting along with other recreational pursuits such as trout fishing, hiking and biking. Outdoor recreation is a significant component to the local economy and heritage. However, unlike Northern Minnesota or other regions, only 5% of the region is open to the public and very little is in any kind of protected status. Rapid growth of nearby cities like Rochester and La Crosse are resulting in an increase of rural development with bluff top and remote country homes. More roads, buildings and associated infrastructure further fragment an already fragmented landscape, disturbing forest habitat and increasing already high erosion rates. Due to the high price of agricultural commodities in recent years, farming practices have increasingly

encroached on these unique habitats, including tracts in this proposal, and have had a significant impact on water quality. Approximately 7% of grassland in the focus area of this project has been converted to cropland since 2008. To maintain the legacy of the Blufflands' unique natural habitats, there are three primary needs or opportunities in the region:

- 1) expand the amount of protected land in strategic locations based on existing protected lands and high-quality habitat
- 2) maximize the quality of this protected habitat through well-executed restoration and enhancement projects
- 3) increase public access to these unique habitats in an area of the state with relatively little public land

Investment in habitat protection and restoration in the Southeast Blufflands by the Outdoor Heritage Fund in partnership with The Nature Conservancy (TNC) would expand and connect larger contiguous blocks of protected lands, allowing land managers to restore and maintain native habitats at a scale difficult to accomplish with fragmented ownership. Benefits of this program include the increased effectiveness of frequent prescribed fire necessary to reclaim the unique "goat prairies" and oak savanna from cedar and buckthorn covered hillsides, which is most effective at a larger scale. Certain habitat complexes stand out in the region, including the different units of the R.J. Dorer Memorial Forest, wildlife management areas, state parks and larger blocks of existing conservation easements. These complexes serve as hubs for additional protection through strategic fee title acquisitions. This proposal aims to enhance this prior conservation investment and ensure that the legacy of the Blufflands region is preserved for the future.

Overall Scope of Work:

This project has three primary components:

- fee title acquisition of approximately 1160 acres of forest and 390 acres of prairie along 4 miles of coldwater trout streams near state forest land, scientific and natural areas and a state park
- Restoration and Enhancement of approximately 485 acres of prairie and 1090 acres of forest within these protected habitat complexes
- Conservation Easements on approximately 600 acres of forest and prairie

TNC will collaborate with Minnesota DNR, the Minnesota Land Trust (MLT) and The Trust for Public Land (TPL). Priority will be placed on targeted tracts within high biodiversity conservation complexes identified through spatial analysis and selected by project partners as representing the highest quality and most diverse habitat types in the region.

Fee Acquisitions:

TNC and TPL will coordinate with MN DNR on all potential fee-title acquisitions. TNC and TPL will assist the participating DNR Divisions by conducting all or some of the following activities: initial site reviews, negotiations with sellers, appraisals, environmental reviews and acquisition of fee title. TNC and TPL will transfer fee acquisition properties to the DNR, except where Conservancy ownership is appropriate. Most property acquired with this funding will be owned and managed by the DNR as State Forest, Wildlife Management Area or Scientific and Natural Areas. All land will be open for public hunting and fishing.

Conservation Easement: The Minnesota Land Trust will acquire approximately 600 acres of conservation easements and develop land management plans for them. The Minnesota Land Trust anticipates using a competitive ranking and bidding system similar to its Wetlands Protection Program to prioritize the best projects and secure them at the lowest cost to the State.

Restoration and Enhancement:

Restoration plans and activities will be coordinated with DNR Forestry, Ecological and Water Resources and Wildlife and Nongame leads for specific units. TNC will contract with Conservation Corps Minnesota as much as possible and other local vendors for invasive brush removal and prescribed fire on approximately 80 acres of bluff prairie and oak savanna enhancement, 330 acres of forest planting, 405 acres of native prairie planting and 760 acres of forest enhancement on new acquisitions.

Results to Date from previous active appropriations:

Fee Acquisition - Closed and transferred 272 acres to MN DNR as Wildlife Management Area, signed purchase agreements for another 1,330 of prairie, forest, floodplain and 7 miles of trout stream within Conservation Opportunity Areas (96% of goal so far). An additional \$2.358 million of private funds was raised to complete large land acquisitions.

Restoration and Enhancement - We have completed brush and tree clearing on 85.6 acres of bluff prairie and oak savanna. We are waiting to close on projects before additional restoration can commence.

Conservation Easements - 331 acres of the proposed 350 acres (95%) have been completed with an additional 110 acres (126%) scheduled for completion soon.

Crops:

Will there be planting of corn or any crop on OHF land purchased or restored in this program - **Yes**

Explain

No food plots will be established on OHF acquired properties. Short-term use of agricultural crops is an accepted Best Practice for prepping a site for prairie restorations. Occasional use of corn or soybeans could be used for restoration in order to control weed seedbeds prior to prairie plantings. We would not expect agricultural crop use to exceed 3 years on any give OHF acquired property. If needed, GMO treated seeds may be used. No neonicotinoid-treated seeds will be planted.

Are any of the crop types planted GMO treated - **Yes**

How does the request address MN habitats that have: historical value to fish and wildlife, wildlife species of greatest conservation need, MN County Biological Survey data, and/or rare, threatened and endangered species inventories:

Most of the projects selected for this proposal are located in complexes of biodiversity significance, as identified by MCBS. They are also in close proximity to current state land, allowing contiguous blocks of habitat to be expanded thereby increasing continuity in a fragmented habitat. Sedimentation and erosion are major threats to fish in the region. Protecting upland natural communities, especially on the steep bluffs that flank most trout streams, will help prevent additional erosion. Aquatic habitat will also benefit from protection of trout stream banks and floodplains. The water quality benefit that comes with the protection of forested upland areas will be significant and contribute to improved trout habitat and non-game fish and mussel habitat.

What is the nature of urgency and why it is necessary to spend public money for this work as soon as possible:

When commodity prices spiked from 2008 to 2013, Southeast Minnesota, especially areas of the Root River Watershed, experienced some of the highest rates of agricultural land conversion in the State. Natural communities in this region are often one season of high corn prices away from being lost to cropland.

Describe the science based planning and evaluation model used:

Spatial analysis identifying complexes of significant opportunity for conservation using:

- environmental quality ranking indices
- areas of significant biodiversity and native plant communities
- proximity to existing conservation lands
- parcel size
- risk of conversion

Which sections of the Minnesota Statewide Conservation and Preservation Plan are applicable to this project:

- H3 Improve connectivity and access to recreation

Which other plans are addressed in this proposal:

- Minnesota Forest Resource Council Landscape Plans
- Tomorrow's Habitat for the Wild and Rare

Which LSOHC section priorities are addressed in this proposal:

Southeast Forest:

- Protect forest habitat through acquisition in fee or easement to prevent parcelization and fragmentation and to provide the ability to access and manage landlocked public properties

Relationship to other funds:

- US Fish and Wildlife Service State Wildlife Grant

The Nature Conservancy also raised \$2.34 Million to complete a 1,000+ acquisition and \$18,000 for another 280 acres fee acquisition in Southeast Minnesota Protection and Restoration Phase II.

SEMN Protection and Restoration Phase 1 & 2 funding helped leverage federal funds to restore 200 acres of private and 300 acres of public land within priority areas. We will continue to partner with MN DNR and leverage additional federal funds to restore/enhance another 200 acres of private and 300 acres of public prairie, savanna and woodland habitat. OHF funding has allowed us to engage public and private land managers to protect and enhance large habitat complexes.

How does this proposal accelerate or supplement your current efforts in this area:

Acquisition and restoration projects included in this proposal build on 50 years of land conservation in the R.J. Doer Memorial Hardwood Forest. However, it is widely recognized that much more needs to be done to protect and restore declining habitats. The Nature Conservancy is working with partners to protect and restore habitat mosaics that include forest, prairie, oak savanna and riparian areas on private and public lands that also protect the watersheds of the region. This proposal accelerates and expands the efforts of partners working in Southeast Minnesota and the Southeast Minnesota Protection and Restoration Phase I & II underway

since FY14 and Phase III recommended for FY16. This proposal will allow us to increase the acres of native habitat restoration on existing conservation lands while continuing habitat protection efforts.

Describe the source and amount of non-OHF money spent for this work in the past:

Appropriation Year	Source	Amount
2013	US Fish and Wildlife Service	\$250,000
2014	US Fish and Wildlife Service	\$250,000

How will you sustain and/or maintain this work after the Outdoor Heritage Funds are expended:

Acquisition projects will be adjacent to or within close proximity to existing protected lands, including state-owned lands and lands under conservation easement. This will allow for the expansion of maintenance and restoration activities that are currently taking place on those protected lands and adjacent private lands. Habitats cleared of invasive species will be maintained with prescribed fire. Protection and restoration projects will improve future prescribed fire and maintenance activities through economies of scale. The tracts protected and enhanced as part of this proposal also meet the prioritization for the State Wildlife Action Plan and MN DNR has been successful securing federal habitat enhancement funding for Southeast Minnesota. Each project is within a Conservation Opportunity Area that receives a higher level of coordination and resource priority by many partners for maintaining and enhancing protected habitats.

Explain the things you will do in the future to maintain project outcomes:

Year	Source of Funds	Step 1	Step 2	Step 3
2018	USFWS-Federal, Game and Fish Fund, Turkey Stamp	Invasive species removal	Prescribed fire	
Every 3-5 years	Game and Fish Fund, Turkey Stamp	Prescribed Fire		
2019	MLT Internal Funds	Baseline documentation and land management plans completed simultaneous to completion of conservation easement.	Annual monitoring for compliance with terms of conservation easements.	Defend easements as necessary.

Activity Details:

If funded, this proposal will meet all applicable criteria set forth in MS 97A.056 - **Yes**

Will local government approval be sought prior to acquisition - **No**

Local government approval will be sought prior to acquisition when necessary and local government will be informed of acquisition projects when optional.

Is the land you plan to acquire free of any other permanent protection - **Yes**

Is this land currently open for hunting and fishing - **No**

Will the land be open for hunting and fishing after completion - **Yes**

Lands acquired in fee will be open for public hunting and fishing and other recreational purposes as allowed by State Forest, Wildlife Management Area, Aquatic Management Area and Scientific and Natural Area designations.

Will the eased land be open for public use - **No**

Is the land you plan to acquire free of any other permanent protection - **Yes**

Will restoration and enhancement work follow best management practices including MS 84.973 Pollinator Habitat Program - **Yes**

Is the activity on permanently protected land per 97A.056, subd 13(f), tribal lands, and/or public waters per MS 103G.005, Subd. 15 - **Yes (WMA, SNA, AMA, Private Land, County/Municipal, State Forests)**

Accomplishment Timeline:

Activity	Approximate Date Completed
Hardwood forest planting.	June 2018
Native Grass Planting	June 2018
Bluff Prairie Clearing	May 2019
Fee Acquisition	June 2019
Conservation Easement Acquisition	June 2019

Federal Funding:

Do you anticipate federal funds as a match for this program - **Yes**

Are the funds confirmed - **No**

What is the approximate date you anticipate receiving confirmation of the federal funds - **December 2015**

Outcomes:

Programs in southeast forest region:

- Large corridors and complexes of biologically diverse wildlife habitat typical of the unglaciated region are restored and protected We will track the acres of priority parcels protected within Conservation Opportunity Areas identified in regional planning. Success within each Conservation Opportunity Area will be determined based on the percentage of area protected.

Budget Spreadsheet

Total Amount of Request: \$9,517,700

Budget and Cash Leverage

BudgetName	LSOHC Request	Anticipated Leverage	Leverage Source	Total
Personnel	\$456,100	\$44,100	Private	\$500,200
Contracts	\$930,000	\$0		\$930,000
Fee Acquisition w/ PILT	\$5,317,000	\$150,000	Private	\$5,467,000
Fee Acquisition w/o PILT	\$1,502,200	\$300,400	Private	\$1,802,600
Easement Acquisition	\$600,000	\$200,000	Private	\$800,000
Easement Stewardship	\$120,000	\$0		\$120,000
Travel	\$14,500	\$0		\$14,500
Professional Services	\$257,500	\$0		\$257,500
Direct Support Services	\$200,400	\$176,600	Private,Private	\$377,000
DNR Land Acquisition Costs	\$25,000	\$0		\$25,000
Capital Equipment	\$0	\$0		\$0
Other Equipment/Tools	\$0	\$0		\$0
Supplies/Materials	\$50,000	\$0		\$50,000
DNR IDP	\$45,000	\$0		\$45,000
Total	\$9,517,700	\$871,100	-	\$10,388,800

Personnel

Position	FTE	Over # of years	LSOHC Request	Anticipated Leverage	Leverage Source	Total
TNC - Grant Administration	0.17	3.00	\$38,000	\$0		\$38,000
TNC - Project Manager	0.62	3.00	\$151,700	\$0		\$151,700
TNC - Protection Staff	0.27	3.00	\$66,400	\$0		\$66,400
MLT - Conservation and Legal Staff	0.40	3.00	\$108,200	\$0		\$108,200
TPL - Protection and Legal Staff	0.30	3.00	\$91,800	\$44,100	Private	\$135,900
Total	1.76	15.00	\$456,100	\$44,100	-	\$500,200

Budget and Cash Leverage by Partnership

BudgetName	Partnership	LSOHC Request	Anticipated Leverage	Leverage Source	Total
Personnel	The Nature Conservancy	\$256,100	\$0		\$256,100
Contracts	The Nature Conservancy	\$880,000	\$0		\$880,000
Fee Acquisition w/ PILT	The Nature Conservancy	\$2,117,000	\$0		\$2,117,000
Fee Acquisition w/o PILT	The Nature Conservancy	\$1,502,200	\$300,400	Private	\$1,802,600
Easement Acquisition	The Nature Conservancy	\$0	\$0		\$0
Easement Stewardship	The Nature Conservancy	\$0	\$0		\$0
Travel	The Nature Conservancy	\$5,000	\$0		\$5,000
Professional Services	The Nature Conservancy	\$120,000	\$0		\$120,000
Direct Support Services	The Nature Conservancy	\$147,400	\$147,400	Private	\$294,800
DNR Land Acquisition Costs	The Nature Conservancy	\$15,000	\$0		\$15,000
Capital Equipment	The Nature Conservancy	\$0	\$0		\$0
Other Equipment/Tools	The Nature Conservancy	\$0	\$0		\$0
Supplies/Materials	The Nature Conservancy	\$50,000	\$0		\$50,000
DNR IDP	The Nature Conservancy	\$25,000	\$0		\$25,000
Total		\$5,117,700	\$447,800	-	\$5,565,500

Personnel - The Nature Conservancy

Position	FTE	Over # of years	LSOHC Request	Anticipated Leverage	Leverage Source	Total
TNC - Grant Administration	0.17	3.00	\$38,000	\$0		\$38,000
TNC - Project Manager	0.62	3.00	\$151,700	\$0		\$151,700
TNC - Protection Staff	0.27	3.00	\$66,400	\$0		\$66,400
Total	1.06	9.00	\$256,100	\$0	-	\$256,100

BudgetName	Partnership	LSOHC Request	Anticipated Leverage	Leverage Source	Total
------------	-------------	---------------	----------------------	-----------------	-------

Personnel	Minnesota Land Trust	\$108,200	\$0		\$108,200
Contracts	Minnesota Land Trust	\$0	\$0		\$0
Fee Acquisition w/ PILT	Minnesota Land Trust	\$0	\$0		\$0
Fee Acquisition w/o PILT	Minnesota Land Trust	\$0	\$0		\$0
Easement Acquisition	Minnesota Land Trust	\$600,000	\$200,000	Private	\$800,000
Easement Stewardship	Minnesota Land Trust	\$120,000	\$0		\$120,000
Travel	Minnesota Land Trust	\$7,500	\$0		\$7,500
Professional Services	Minnesota Land Trust	\$122,500	\$0		\$122,500
Direct Support Services	Minnesota Land Trust	\$23,800	\$0		\$23,800
DNR Land Acquisition Costs	Minnesota Land Trust	\$0	\$0		\$0
Capital Equipment	Minnesota Land Trust	\$0	\$0		\$0
Other Equipment/Tools	Minnesota Land Trust	\$0	\$0		\$0
Supplies/Materials	Minnesota Land Trust	\$0	\$0		\$0
DNR IDP	Minnesota Land Trust	\$0	\$0		\$0
Total		\$982,000	\$200,000		\$1,182,000

Personnel - Minnesota Land Trust

Position	FTE	Over # of years	LSOHC Request	Anticipated Leverage	Leverage Source	Total
MLT - Conservation and Legal Staff	0.40	3.00	\$108,200	\$0		\$108,200
Total	0.40	3.00	\$108,200	\$0		\$108,200

Budget Name	Partnership	LSOHC Request	Anticipated Leverage	Leverage Source	Total
Personnel	Trust For Public Land	\$91,800	\$44,100	Private	\$135,900
Contracts	Trust For Public Land	\$50,000	\$0		\$50,000
Fee Acquisition w/ PILT	Trust For Public Land	\$3,200,000	\$150,000	Private	\$3,350,000
Fee Acquisition w/o PILT	Trust For Public Land	\$0	\$0		\$0
Easement Acquisition	Trust For Public Land	\$0	\$0		\$0
Easement Stewardship	Trust For Public Land	\$0	\$0		\$0
Travel	Trust For Public Land	\$2,000	\$0		\$2,000
Professional Services	Trust For Public Land	\$15,000	\$0		\$15,000
Direct Support Services	Trust For Public Land	\$29,200	\$29,200	Private	\$58,400
DNR Land Acquisition Costs	Trust For Public Land	\$10,000	\$0		\$10,000
Capital Equipment	Trust For Public Land	\$0	\$0		\$0
Other Equipment/Tools	Trust For Public Land	\$0	\$0		\$0
Supplies/Materials	Trust For Public Land	\$0	\$0		\$0
DNR IDP	Trust For Public Land	\$20,000	\$0		\$20,000
Total		\$3,418,000	\$223,300		\$3,641,300

Personnel - Trust For Public Land

Position	FTE	Over # of years	LSOHC Request	Anticipated Leverage	Leverage Source	Total
TPL - Protection and Legal Staff	0.30	3.00	\$91,800	\$44,100	Private	\$135,900
Total	0.30	3.00	\$91,800	\$44,100		\$135,900

Amount of Request: \$9,517,700

Amount of Leverage: \$871,100

Leverage as a percent of the Request: 9.15%

Output Tables

Table 1a. Acres by Resource Type

Type	Wetlands	Prairies	Forest	Habitats	Total
Restore	0	405	330	0	735
Protect in Fee with State PILT Liability	0	115	1,160	0	1,275
Protect in Fee W/O State PILT Liability	0	275	0	0	275
Protect in Easement	0	100	500	0	600
Enhance	0	80	760	0	840
Total	0	975	2,750	0	3,725

Table 1b. How many of these Prairie acres are Native Prairie?

Type	Native Prairie
Restore	0
Protect in Fee with State PILT Liability	0
Protect in Fee W/O State PILT Liability	0
Protect in Easement	0
Enhance	50
Total	50

Table 2. Total Requested Funding by Resource Type

Type	Wetlands	Prairies	Forest	Habitats	Total
Restore	\$0	\$404,800	\$300,000	\$0	\$704,800
Protect in Fee with State PILT Liability	\$0	\$1,326,300	\$4,285,700	\$0	\$5,612,000
Protect in Fee W/O State PILT Liability	\$0	\$1,466,500	\$0	\$0	\$1,466,500
Protect in Easement	\$0	\$479,100	\$479,100	\$0	\$958,200
Enhance	\$0	\$110,000	\$666,200	\$0	\$776,200
Total	\$0	\$3,786,700	\$5,731,000	\$0	\$9,517,700

Table 3. Acres within each Ecological Section

Type	Metro/Urban	Forest/Prairie	SE Forest	Prairie	Northern Forest	Total
Restore	0	0	735	0	0	735
Protect in Fee with State PILT Liability	0	0	1,275	0	0	1,275
Protect in Fee W/O State PILT Liability	0	0	275	0	0	275
Protect in Easement	0	0	600	0	0	600
Enhance	0	0	840	0	0	840
Total	0	0	3,725	0	0	3,725

Table 4. Total Requested Funding within each Ecological Section

Type	Metro/Urban	Forest/Prairie	SE Forest	Prairie	Northern Forest	Total
Restore	\$0	\$0	\$704,800	\$0	\$0	\$704,800
Protect in Fee with State PILT Liability	\$0	\$0	\$5,612,000	\$0	\$0	\$5,612,000
Protect in Fee W/O State PILT Liability	\$0	\$0	\$1,466,500	\$0	\$0	\$1,466,500
Protect in Easement	\$0	\$0	\$958,200	\$0	\$0	\$958,200
Enhance	\$0	\$0	\$776,200	\$0	\$0	\$776,200
Total	\$0	\$0	\$9,517,700	\$0	\$0	\$9,517,700

Table 5. Average Cost per Acre by Resource Type

Type	Wetlands	Prairies	Forest	Habitats
Restore	\$0	\$1,000	\$909	\$0
Protect in Fee with State PILT Liability	\$0	\$11,533	\$3,695	\$0
Protect in Fee W/O State PILT Liability	\$0	\$5,333	\$0	\$0
Protect in Easement	\$0	\$4,791	\$958	\$0
Enhance	\$0	\$1,375	\$877	\$0

Table 6. Average Cost per Acre by Ecological Section

Type	Metro/Urban	Forest/Prairie	SE Forest	Prairie	Northern Forest
Restore	\$0	\$0	\$959	\$0	\$0
Protect in Fee with State PILT Liability	\$0	\$0	\$4,402	\$0	\$0
Protect in Fee W/O State PILT Liability	\$0	\$0	\$5,333	\$0	\$0
Protect in Easement	\$0	\$0	\$1,597	\$0	\$0
Enhance	\$0	\$0	\$924	\$0	\$0

Target Lake/Stream/River Feet or Miles

4

Parcel List

Section 1 - Restore / Enhance Parcel List

Fillmore

Name	TRDS	Acres	Est Cost	Existing Protection?
Fillmore	10212216	280	\$200,000	
Fillmore2	10208202	1,071	\$680,000	

Olmsted

Name	TRDS	Acres	Est Cost	Existing Protection?
Olmsted	2	40	\$0	No

Section 2 - Protect Parcel List

Fillmore

Name	TRDS	Acres	Est Cost	Existing Protection?	Hunting?	Fishing?
Root River	10208213	113	\$0	No	No	no
Spring Valley Creek	10312220	40	\$0	No	No	
Wisel Creek	10208229	80	\$0	no	No	

Goodhue

Name	TRDS	Acres	Est Cost	Existing Protection?	Hunting?	Fishing?
Cannon River	11316229	74	\$0	No	No	
Wabasha	109092	270	\$1,000,000	No	Full	Full

Houston

Name	TRDS	Acres	Est Cost	Existing Protection?	Hunting?	Fishing?
Daley Creek	10407227	100	\$0	No	No	
Houston2	10212221	275	\$1,100,000	No	Full	Full
South Fork	10307230	840	\$2,500,000	No	Full	Full

Olmsted

Name	TRDS	Acres	Est Cost	Existing Protection?	Hunting?	Fishing?
Whitewater River	10710208	197	\$0	No	No	

Wabasha

Name	TRDS	Acres	Est Cost	Existing Protection?	Hunting?	Fishing?
Wabasha	11011214	200	\$800,000	No	Full	Full
West Indian Creek	10911221	50	\$0	No	No	
Zumbro Bottoms	10912227	279	\$0	No	No	
Zumbro Bottoms	11011233	118	\$0	No	No	

Winona

Name	TRDS	Acres	Est Cost	Existing Protection?	Hunting?	Fishing?
Whitewater	10710224	306	\$0	No	No	
Whitewater1	10810202	42	\$150,000	No	Full	full

Section 2a - Protect Parcel with Bldgs

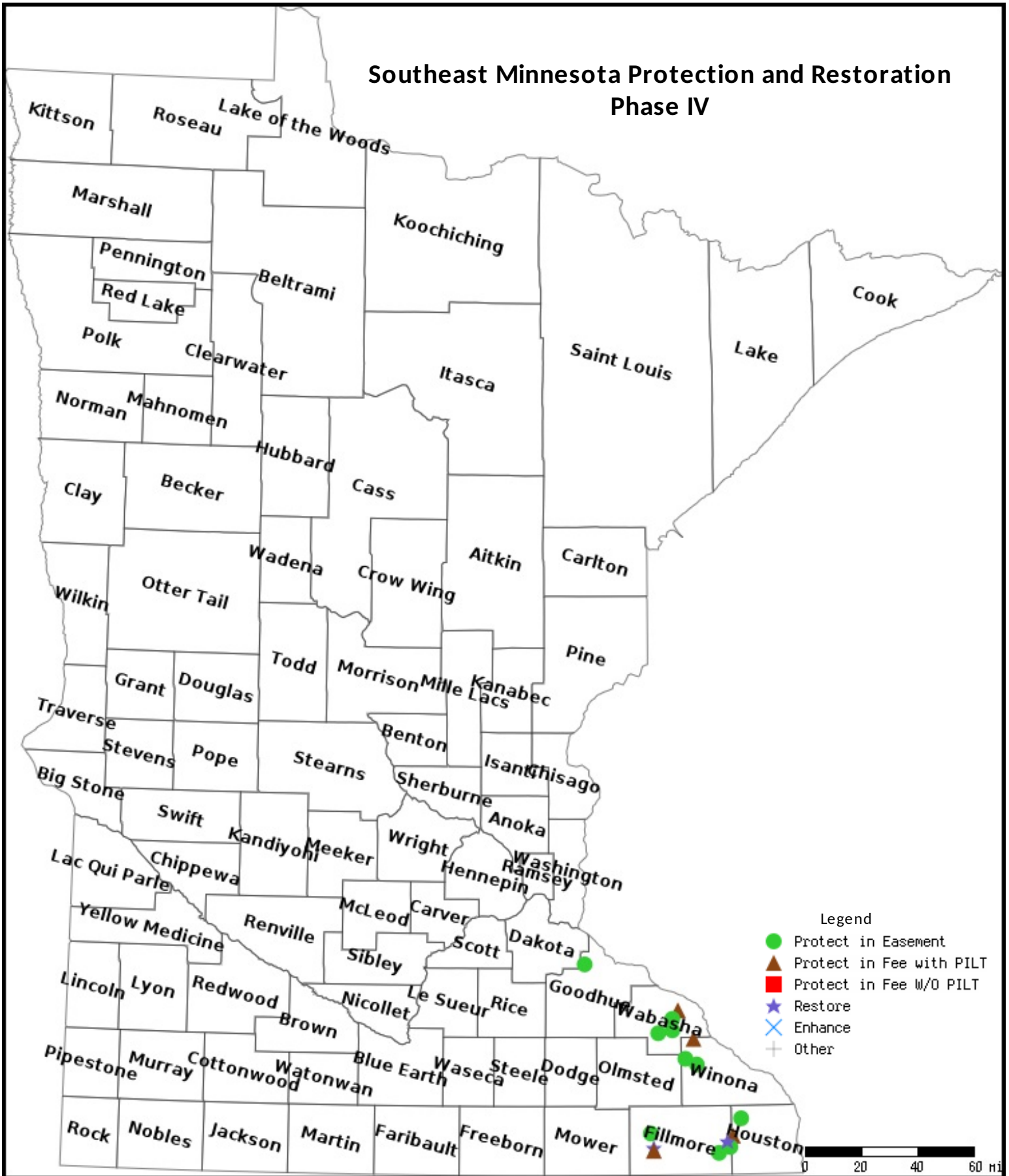
No parcels with an activity type protect and has buildings.

Section 3 - Other Parcel Activity

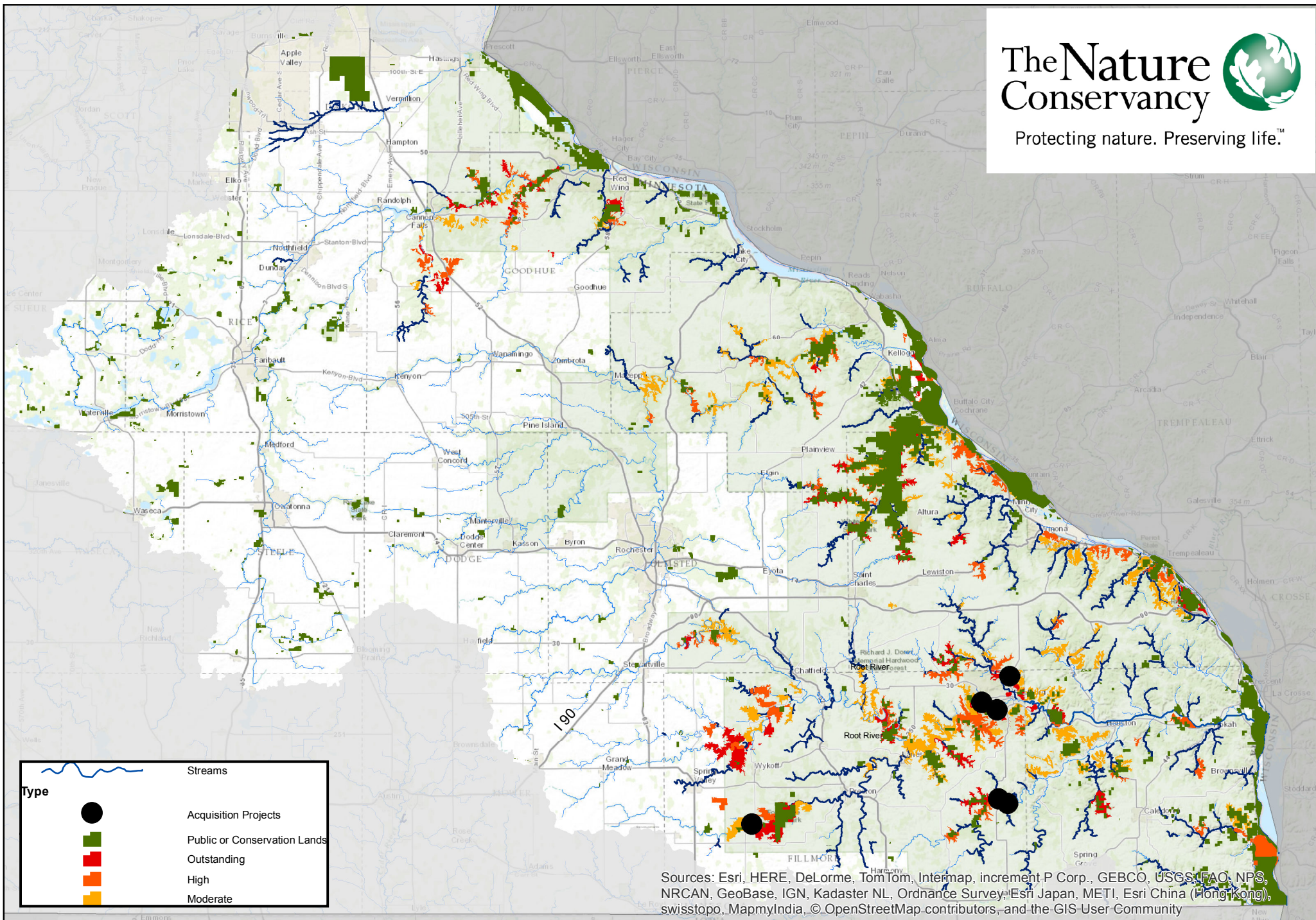
No parcels with an other activity type.

Parcel Map

Southeast Minnesota Protection and Restoration Phase IV

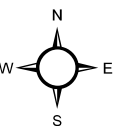


Data Generated From Parcel List



Southeast Minnesota Protection and Restoration Phase 4

0 15 30 Miles



Parcels are reviewed by both a Division of MN DNR and Conservancy to ensure that they meet the priorities of both partners.

Criteria for identification of key conservation parcels.

State-owned properties represent significant blocks of ownership in Conservation Opportunity Areas(COA) in Southeast Minnesota as identified by Landscape Stewardship Plans and present opportunities for targeted stewardship. Where landscape stewardship plans and identified Conservation Opportunity Areas do not exist, core areas are identified by the Areas of Significant Native Biodiversity Significance. State-owned lands containing mapped native plant communities were selected as a starting point. Additional management acreage and contiguous land cover were increased by selecting adjoining parcels of private land that met certain criteria. This initial private parcel selection was made using the following criteria, with each parcel satisfying all points (Figure 1):

- Parcel is within Conservation Opportunity Area or Area of Significant Native Biodiversity (allows for large landscape management and management efficiencies, i.e. large scale Rx fire)
- Parcel contains an Minnesota Biological Survey mapped native plant community
- Parcel was equal to or greater than 80 acres in size
- Parcel property line began within ¼ mile of a state-owned parcel
- A Conservation Partner is willing to accept the property/meets partner objectives (SNA, WMA, Forestry)
- Willing seller

Some land parcels were selected for stewardship activities, while others were chosen for potential acquisition or conservation easement purchase.

Where multiple units of conservation lands exist within a COA , habitat corridors may need to be established to support the larger landscape and identified core areas. Parcels within an identified corridor should meet the following criteria:

- Between 2 conservation land units
- Within ½ mile of existing conservation land unit
- Contain more than 50% habitat

Figure 1. Example of parcels identified for stewardship activities in Pine Creek/Rushford Conservation Opportunity Area. The selected private parcels meet criteria and are considered for acquisition, easement, or management.

